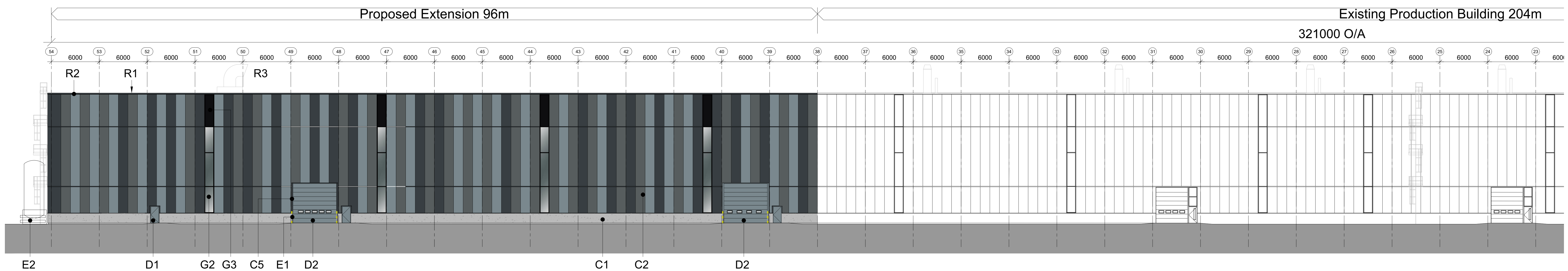
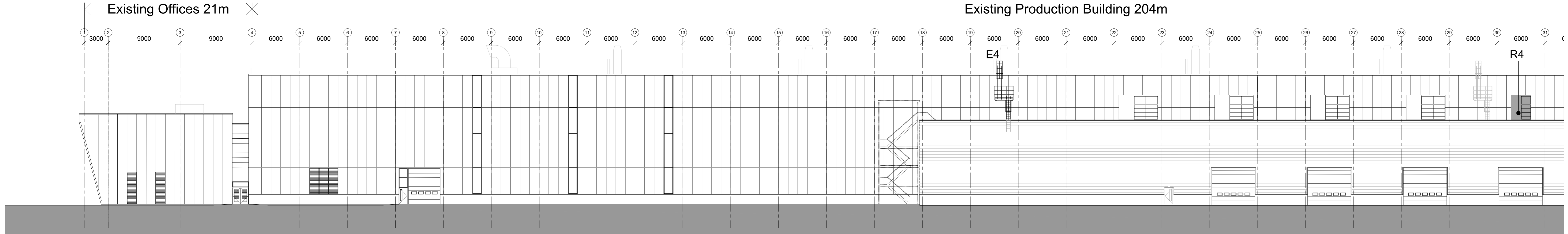


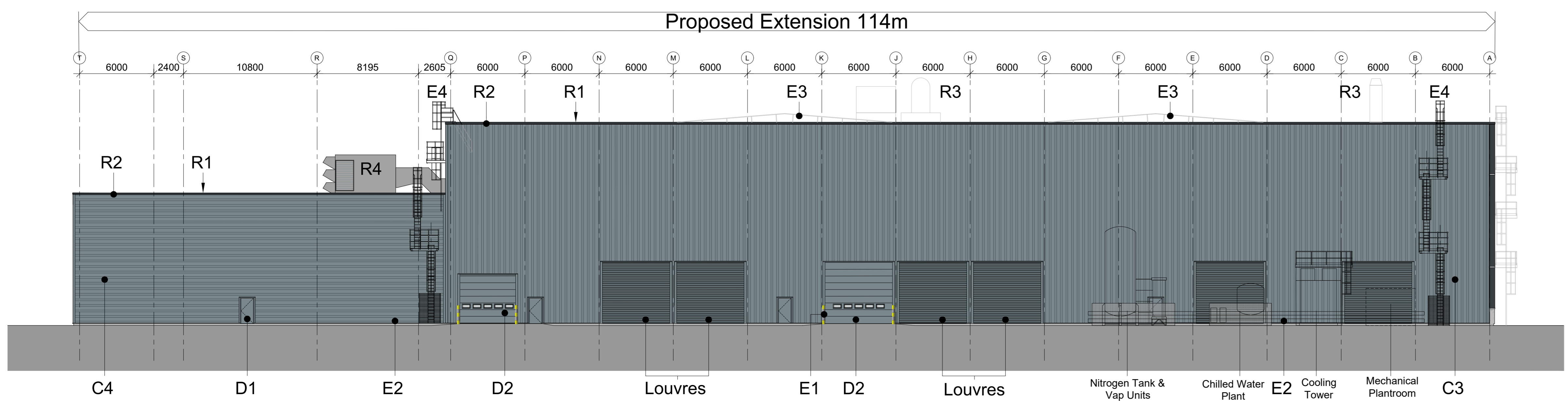
notes  
 this drawing and design is the copyright of oja architects llp and must not be reproduced in part or whole without prior written consent. contractors must verify all dimensions on site before commencing work or preparing shop drawings. If in doubt ASK.  
 where this drawing contains any Ordnance Survey mapping material, it has been reproduced under license number 100022276.  
 Ordnance Survey © Crown copyright



Proposed East Elevation



Proposed West Elevation



Proposed South Elevation

**MATERIALS:**

**CLADDING:**

- C1. A continuation of the Precast Concrete Dado Height Wall along the long east front elevation only to match existing.
- C2. Vertical Flat Panel Cladding to the front long east elevation to match existing colours and random mix of (a) RAL7000 Alaska Grey, (b) RAL7002 Slate Grey and (c) RAL7016 Anthracite.
- C3. Vertical Trapezoidal Cladding to the end south elevation and the rear western elevation at high-level above the lower shipping area. Colour: RAL7000 Alaska Grey.
- C4. Horizontal Trapezoidal Cladding to the end south rear west elevations of the shipping area. Colour: RAL7000 Alaska Grey.
- C5. Red return flashings to level access door heads & jambs on South & West elevations.

**ROOF:**

- R1. Composite Panel Roof System. Colour: RAL 240 80 05 Gull Grey.
- R2. Parapet Capping: Colour: RAL7016 Antracite
- R3. Roof Mounted Extract Flues
- R4. Roof Mounted Plant.

**GLAZING:**

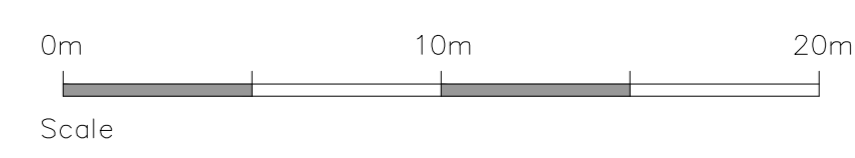
- G1. Non-Fragile Roof-lights , percentage of cover TBC.
- G2. PPC Aluminium Framed Curtain Walling. Colour: RAL 9005 Matt Black
- G3. Insulated Spandrel Panel. Colour: RAL 9005 Matt Black

**DOORS:**

- D1. PPC Steel External Personnel Door. Colour: RAL7000 Alaska Grey.
- D2. Insulated Sectional Level Access Door. Colour: RAL7000 Alaska Grey.

**OTHER EXTERNAL ITEMS:**

- E1. Protection Bollards to Level Access Doors.
- E2. Armco Barrier (double) to protect external plant.
- E3. Permanent Barrier Guarding / Roof Edge Protection. Colour: RAL7000 Alaska Grey.
- E4. Galvanised steel cat ladder means of access & escape.



Continued on Drawing 7262-125

no. date revision by

oja architects llp  
 1170 Elliott Court  
 Herdell Avenue  
 Coventry Business Park  
 COVENTRY CV5 6UB  
 E: oja@oja-architects.com  
 W: www.oja-architects.com

T: 024 7625 3200  
 F: 024 7625 3210

AJA Architects is the trading name of AJA Architects Consulting Limited a limited company registered in England and Wales. Registered office: 1170 Elliott Court, Coventry CV5 6UB. Client:

Magna International Holdings (UK) Limited and Rula Developments Ltd

project  
 Extension to Existing Manufacturing Plant and Associated Works

drawing

PROPOSED ELEVATIONS  
 Sheet 1 of 2

scale 1:200@A0 drawn rpw  
 checked spp date 27.10.23

no  
 7262-124